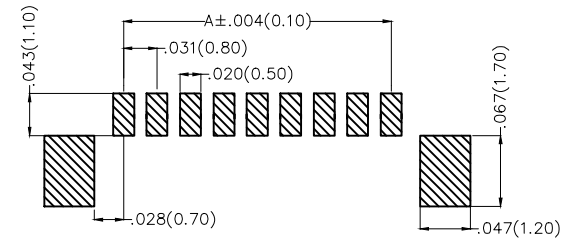
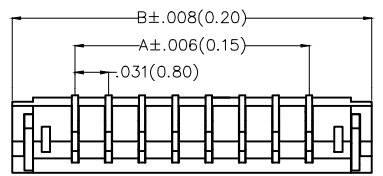
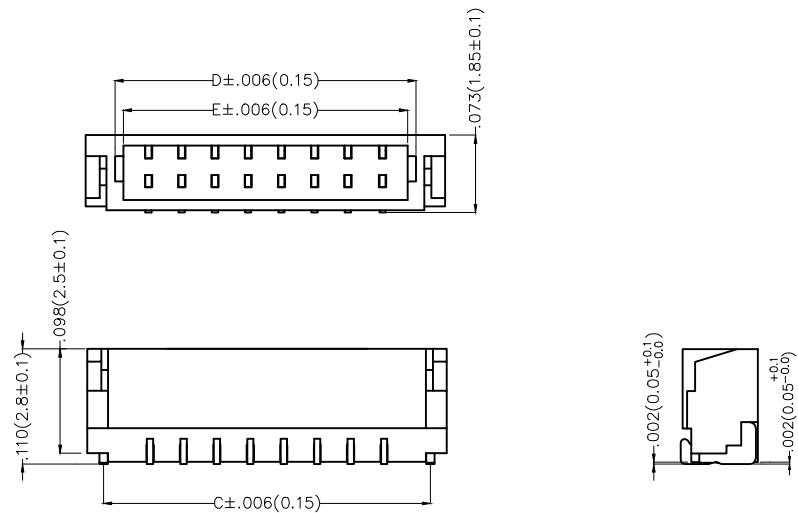


REV	LOCATIONS	DESCRIPTION	DATE	REVISER	APPD



Recommended P.C.Board Layout

Electrical
 Current Rating: 0.2A AC(rms)/DC(AWG36)
 Current Rating: 0.5A AC(rms)/DC(AWG32)
 Voltage Rating: 30V AC(rms)/DC
 Contact Resistance: 20 m Ω Max
 Insulation Resistance: 100 M Ω MIN
 Withstanding Voltage: 200V AC r.m.s
 Temperature Range-Operating: -25°C~+85°C

Material and Plating
 Housing: PA9T(UL 94V-0)
 Contact Pin: Brass/ Gold or tin plated
 Solder Tab: Copper alloy/ Tin plated

Ordering Information

FWF 080 01 - S XX S X 4 W5 M
 1 2 3 4 5 6 7 8 9 10

1 Category FWF-Wafer	2 Series Number 080-Pitch0.8mm	3 Distinction No. 01	4 Row Option Single Row	5 Circuits XX	6 Entry Angle S-180° Vertical
7 Plating 1-Gold Plated 2-Tin Plated	8 Material-Resin 4-PA9T	9 Color-Resin W5-White	10 Packaging M-Reel		

 THIRD ANGLE PROJECTION	GENERAL TOLERANCES (UNLESS SPECIFIED)		APPROVE BY FRANK	DATE 28/JUN/13	PART NO. FWF08001-SXXSX4W5M	ITEM NO. FWF08001	 Leader Of Industry
	DESIGN UNITS Inch (metric)	X.±.012(0.30) X.±5'	CHECKED BY JACOB	DATE 28/JUN/13	TITLE Wire to Board (Wafer) Pitch 0.8mm 180° Vertical (SMT)		
SCALE 5:1	SIZE A4	X.XX±.006(0.15) .XX±1'	DRAWN BY CHERRY	DATE 28/JUN/13	THIS DRAWING CONTAINS INFORMATION THAT IS PROPRIETARY TO TXGA INDUSTRIAL ELECTRONICS(S.Z)CO.,LTD AND SHOULD NOT BE USED WITHOUT WRITTEN PERMISSION		



REV	LOCATIONS	DESCRIPTION	DATE	REVISER	APPD

Material and Plating : Housing PA9T UL94V-0,Tin Plated.

Circuits (n)	Part No.	Dimensions(in/mm)				
		A	B	C	D	E
2	FWF08001-S02S24W5M	.031(0.80)	.150(3.80)	.118(3.00)	.094(2.40)	.079(2.00)
3	FWF08001-S03S24W5M	.063(1.60)	.181(4.60)	.150(3.80)	.126(3.20)	.031(2.80)
4	FWF08001-S04S24W5M	.094(2.40)	.213(5.40)	.181(4.60)	.157(4.00)	.142(3.60)
5	FWF08001-S05S24W5M	.126(3.20)	.244(6.20)	.213(5.40)	.189(4.80)	.173(4.40)
6	FWF08001-S06S24W5M	.157(4.00)	.276(7.00)	.244(6.20)	.220(5.60)	.205(5.20)
7	FWF08001-S07S24W5M	.189(4.80)	.307(7.80)	.276(7.00)	.252(6.40)	.236(6.00)
8	FWF08001-S08S24W5M	.220(5.60)	.339(8.60)	.307(7.80)	.283(7.20)	.268(6.80)
9	FWF08001-S09S24W5M	.252(6.40)	.370(9.40)	.339(8.60)	.315(8.00)	.299(7.60)
10	FWF08001-S10S24W5M	.283(7.20)	.402(10.20)	.370(9.40)	.346(8.80)	.331(8.40)
11	FWF08001-S11S24W5M	.315(8.00)	.433(11.00)	.402(10.20)	.378(9.60)	.362(9.20)
12	FWF08001-S12S24W5M	.346(8.80)	.465(11.80)	.433(11.00)	.409(10.40)	.394(10.00)
14	FWF08001-S14S24W5M	.409(10.40)	.528(13.40)	.496(12.60)	.472(12.00)	.457(11.60)
16	FWF08001-S16S24W5M	.472(12.00)	.591(15.00)	.559(14.20)	.535(13.60)	.520(13.20)
20	FWF08001-S20S24W5M	.472(15.20)	.717(18.20)	.685(17.40)	.661(16.80)	.646(16.40)

Material and Plating : Housing PA9T UL94V-0 ,Gold Plated.

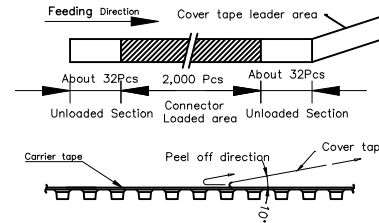
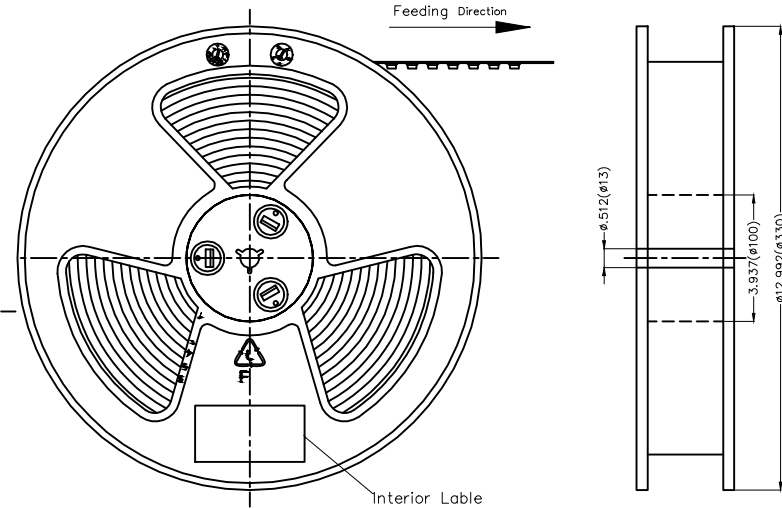
Circuits (n)	Part No.	Dimensions(in/mm)				
		A	B	C	D	E
2	FWF08001-S02S14W5M	.031(0.80)	.150(3.80)	.118(3.00)	.094(2.40)	.079(2.00)
3	FWF08001-S03S14W5M	.063(1.60)	.181(4.60)	.150(3.80)	.126(3.20)	.031(2.80)
4	FWF08001-S04S14W5M	.094(2.40)	.213(5.40)	.181(4.60)	.157(4.00)	.142(3.60)
5	FWF08001-S05S14W5M	.126(3.20)	.244(6.20)	.213(5.40)	.189(4.80)	.173(4.40)
6	FWF08001-S06S14W5M	.157(4.00)	.276(7.00)	.244(6.20)	.220(5.60)	.205(5.20)
7	FWF08001-S07S14W5M	.189(4.80)	.307(7.80)	.276(7.00)	.252(6.40)	.236(6.00)
8	FWF08001-S08S14W5M	.220(5.60)	.339(8.60)	.307(7.80)	.283(7.20)	.268(6.80)
9	FWF08001-S09S14W5M	.252(6.40)	.370(9.40)	.339(8.60)	.315(8.00)	.299(7.60)
10	FWF08001-S10S14W5M	.283(7.20)	.402(10.20)	.370(9.40)	.346(8.80)	.331(8.40)
11	FWF08001-S11S14W5M	.315(8.00)	.433(11.00)	.402(10.20)	.378(9.60)	.362(9.20)
12	FWF08001-S12S14W5M	.346(8.80)	.465(11.80)	.433(11.00)	.409(10.40)	.394(10.00)
14	FWF08001-S14S14W5M	.409(10.40)	.528(13.40)	.496(12.60)	.472(12.00)	.457(11.60)
16	FWF08001-S16S14W5M	.472(12.00)	.591(15.00)	.559(14.20)	.535(13.60)	.520(13.20)
20	FWF08001-S20S14W5M	.472(15.20)	.717(18.20)	.685(17.40)	.661(16.80)	.646(16.40)

 THIRD ANGLE PROJECTION	GENERAL TOLERANCES (UNLESS SPECIFIED)		APPROVE BY FRANK	DATE 28/JUN/13	PART NO. FWF08001-SXXSX4W5M	ITEM NO. FWF08001	 Leader Of Industry	
	DESIGN UNITS Inch (metric)	X.±.012(0.30)	X.±5'	CHECKED BY JACOB	DATE 28/JUN/13	TITLE Wire to Board (Wafer) Pitch 0.80mm 180° Vertical (SMT)		REV 0
SCALE 5:1	SIZE A4	X.XX±.006(0.15)	.XX±1'	DRAWN BY CHERRY	DATE 28/JUN/13	THIS DRAWING CONTAINS INFORMATION THAT IS PROPRIETARY TO TXGA INDUSTRIAL ELECTRONICS(S.Z)CO.,LTD AND SHOULD NOT BE USED WITHOUT WRITTEN PERMISSION		

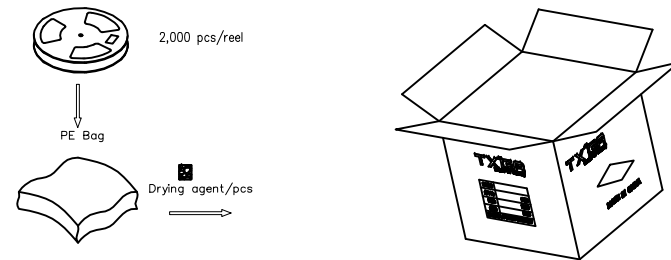
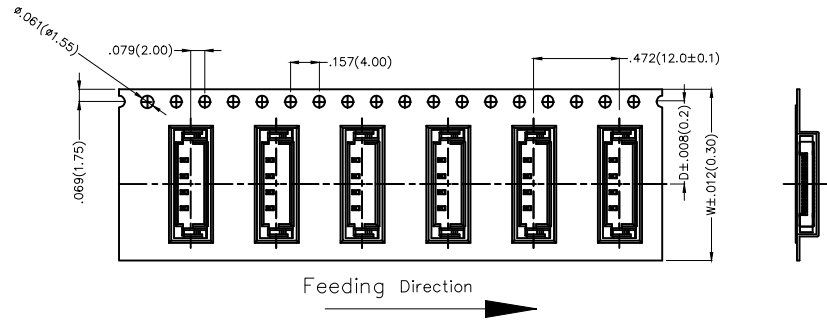
REV	LOCATIONS	DESCRIPTION	DATE	REVISER	APPD

Note:

- 10 sprocket hole cumulative tolerance ± 0.2
- Carrier camber is within 1.0mm in 250mm
- Material: White Conductive polystyrene Alloy 100% recyclable
- All dimensions meet EIA-481-3 requirements
- Peel off force of cover tape & carrier tape: 20g~130g (0.2N~1.3N)
- Component load per 13" reel: 2,000 pcs



Circuits (n)	Dimensions(in/mm)		Circuits (n)	Dimensions(in/mm)	
	D	W		D	W
2	.295(7.50)	.630(16.00)	10	.453(11.50)	.945(24.00)
3	.295(7.50)	.630(16.00)	11	.453(11.50)	.945(24.00)
4	.295(7.50)	.630(16.00)	12	.453(11.50)	.945(24.00)
5	.295(7.50)	.630(16.00)	14	.453(11.50)	.945(24.00)
6	.295(7.50)	.630(16.00)	16	.453(11.50)	.945(24.00)
7	.295(7.50)	.630(16.00)	20	.453(11.50)	.945(24.00)
8	.295(7.50)	.630(16.00)			
9	.295(7.50)	.630(16.00)			



 THIRD ANGLE PROJECTION	GENERAL TOLERANCES (UNLESS SPECIFIED)		APPROVE BY	DATE	PART NO.	ITEM NO.	 Leader Of Industry
	X. \pm .012(0.30)	X.' \pm 5'	FRANK	28/JUN/13	FWF08001-SXXS4W5M	FWF08001	
DESIGN UNITS Inch (metric)	X.XX \pm .008(0.20)	X.' \pm 2'	CHECKED BY	DATE	TITLE		REV 0
SCALE	X.XX \pm .006(0.15)	.XX' \pm 1'	JACOB	28/JUN/13	Wire to Board (Wafer)		SHEET NO. 3/3
SIZE	X.XXX \pm .004(0.10)	.XXX' \pm 0.5'	DRAWN BY	DATE	THIS DRAWING CONTAINS INFORMATION THAT IS PROPRIETARY TO TXGA INDUSTRIAL ELECTRONICS(S.Z)CO.,LTD AND SHOULD NOT BE USED WITHOUT WRITTEN PERMISSION		
5:1			CERRY	28/JUN/13			

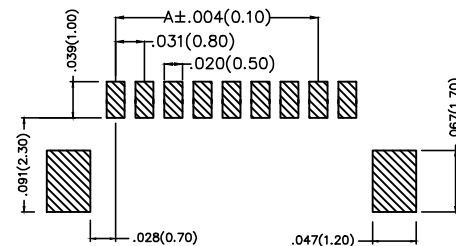
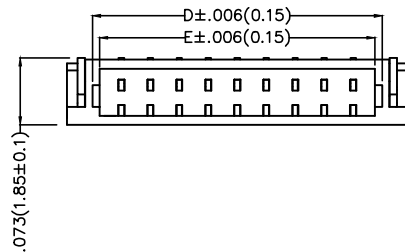
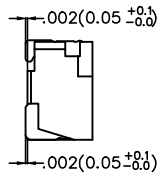
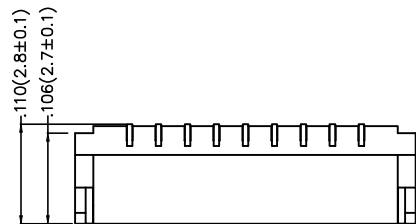
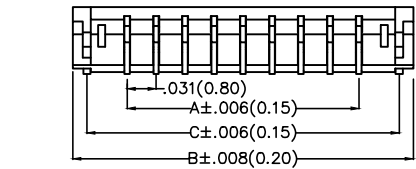
REV	LOCATIONS	DESCRIPTION	DATE	REVISER	APPD

Electrical

Current Rating: 0.2A AC(rms)/DC(AWG36)
 Current Rating: 0.5A AC(rms)/DC(AWG32)
 Voltage Rating: 30V AC(rms)/DC
 Contact Resistance: 20 mΩ Max
 Insulation Resistance: 100 MΩ MIN
 Withstanding Voltage: 200V AC r.m.s
 Temperature Range—Operating: -25°C~+85°C

Material and Plating

Housing: PA9T(UL 94V-0)
 Contact Pin: Brass/ Gold or tin plated
 Solder Tab: Copper alloy/ Tin plated



Recommended P.C.Board Layout

Ordering Information

FWF 080 02 - S XX B X 4 W5 M
 1 2 3 4 5 6 7 8 9 10

1 Category FWF—Wafer	2 Series Number 080—Pitch0.8mm	3 Distinction No. 02	4 Row Option Single Row	5 Circuits XX	6 Entry Angle B—90° Angle
7 Plating 1—Gold Plated 2—Tin Plated	8 Material—Resin 4—PA9T	9 Color—Resin W5—White	10 Packaging M—Reel		

 THIRD ANGLE PROJECTION	GENERAL TOLERANCES (UNLESS SPECIFIED)		APPROVE BY FRANK	DATE 28/JUN/13	PART NO. FWF08002-SXXBX4W5M	ITEM NO. FWF08002	 Leader Of Industry
	DESIGN UNITS Inch (metric)	X.X±.012(0.30) X.±5°	CHECKED BY JACOB	DATE 28/JUN/13	TITLE Wire to Board (Wafer) Pitch 0.8mm 90° Angle (SMT)		
SCALE 5:1	SIZE A4	X.XX±.006(0.15) .XX±1°	DRAWN BY CHERRY	DATE 28/JUN/13	THIS DRAWING CONTAINS INFORMATION THAT IS PROPRIETARY TO TXGA INDUSTRIAL ELECTRONICS(S.Z.)CO.,LTD AND SHOULD NOT BE USED WITHOUT WRITTEN PERMISSION		

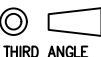

REV	LOCATIONS	DESCRIPTION	DATE	REVISER	APPD

Material and Plating : Housing PA9T UL94V-0,Tin Plated.

Circuits (n)	Part No.	Dimensions(in/mm)				
		A	B	C	D	E
2	FWF08002-S02B24W5M	.031(0.80)	.150(3.80)	.118(3.00)	.094(2.40)	.079(2.00)
3	FWF08002-S03B24W5M	.063(1.60)	.181(4.60)	.150(3.80)	.126(3.20)	.031(2.80)
4	FWF08002-S04B24W5M	.094(2.40)	.213(5.40)	.181(4.60)	.157(4.00)	.142(3.60)
5	FWF08002-S05B24W5M	.126(3.20)	.244(6.20)	.213(5.40)	.189(4.80)	.173(4.40)
6	FWF08002-S06B24W5M	.157(4.00)	.276(7.00)	.244(6.20)	.220(5.60)	.205(5.20)
7	FWF08002-S07B24W5M	.189(4.80)	.307(7.80)	.276(7.00)	.252(6.40)	.236(6.00)
8	FWF08002-S08B24W5M	.220(5.60)	.339(8.60)	.307(7.80)	.283(7.20)	.268(6.80)
9	FWF08002-S09B24W5M	.252(6.40)	.370(9.40)	.339(8.60)	.315(8.00)	.299(7.60)
10	FWF08002-S10B24W5M	.283(7.20)	.402(10.20)	.370(9.40)	.346(8.80)	.331(8.40)
11	FWF08002-S11B24W5M	.315(8.00)	.433(11.00)	.402(10.20)	.378(9.60)	.362(9.20)
12	FWF08002-S12B24W5M	.346(8.80)	.465(11.80)	.433(11.00)	.409(10.40)	.394(10.00)
14	FWF08002-S14B24W5M	.409(10.40)	.528(13.40)	.496(12.60)	.472(12.00)	.457(11.60)
16	FWF08002-S16B24W5M	.472(12.00)	.591(15.00)	.559(14.20)	.535(13.60)	.520(13.20)
20	FWF08002-S20B24W5M	.472(15.20)	.717(18.20)	.685(17.40)	.661(16.80)	.646(16.40)

Material and Plating : Housing PA9T UL94V-0 ,Gold Plated.

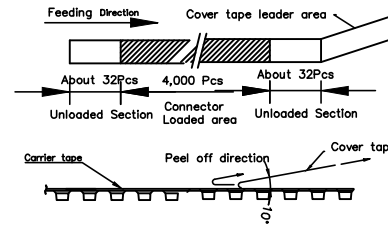
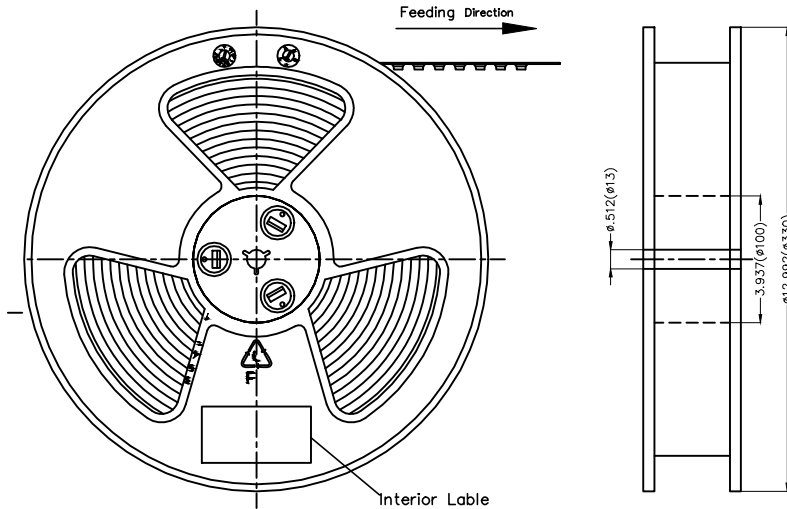
Circuits (n)	Part No.	Dimensions(in/mm)				
		A	B	C	D	E
2	FWF08002-S02B14W5M	.031(0.80)	.150(3.80)	.118(3.00)	.094(2.40)	.079(2.00)
3	FWF08002-S03B14W5M	.063(1.60)	.181(4.60)	.150(3.80)	.126(3.20)	.031(2.80)
4	FWF08002-S04B14W5M	.094(2.40)	.213(5.40)	.181(4.60)	.157(4.00)	.142(3.60)
5	FWF08002-S05B14W5M	.126(3.20)	.244(6.20)	.213(5.40)	.189(4.80)	.173(4.40)
6	FWF08002-S06B14W5M	.157(4.00)	.276(7.00)	.244(6.20)	.220(5.60)	.205(5.20)
7	FWF08002-S07B14W5M	.189(4.80)	.307(7.80)	.276(7.00)	.252(6.40)	.236(6.00)
8	FWF08002-S08B14W5M	.220(5.60)	.339(8.60)	.307(7.80)	.283(7.20)	.268(6.80)
9	FWF08002-S09B14W5M	.252(6.40)	.370(9.40)	.339(8.60)	.315(8.00)	.299(7.60)
10	FWF08002-S10B14W5M	.283(7.20)	.402(10.20)	.370(9.40)	.346(8.80)	.331(8.40)
11	FWF08002-S11B14W5M	.315(8.00)	.433(11.00)	.402(10.20)	.378(9.60)	.362(9.20)
12	FWF08002-S12B14W5M	.346(8.80)	.465(11.80)	.433(11.00)	.409(10.40)	.394(10.00)
14	FWF08002-S14B14W5M	.409(10.40)	.528(13.40)	.496(12.60)	.472(12.00)	.457(11.60)
16	FWF08002-S16B14W5M	.472(12.00)	.591(15.00)	.559(14.20)	.535(13.60)	.520(13.20)
20	FWF08002-S20B14W5M	.472(15.20)	.717(18.20)	.685(17.40)	.661(16.80)	.646(16.40)

 THIRD ANGLE PROJECTION	GENERAL TOLERANCES (UNLESS SPECIFIED)		APPROVE BY	DATE	PART NO.	ITEM NO.	 Leader Of Industry
	X.±.012(0.30)	X.±5'	CHECKED BY	DATE	FWF08002-SXXBX4W5M	FWF08002	
DESIGN UNITS Inch (metric)	X.XX±.008(0.20)	X.±2'	JACOB	28/JUN/13	TITLE		REV 0 SHEET NO. 2/3
SCALE	X.XX±.006(0.15)	.XX'±1'	DRAWN BY	DATE	Wire to Board (Wafer) Pitch 0.8mm 90° Angle (SMT)		
5:1	X.XXX±.004(0.10)	.XXX'±0.5'	CERRY	28/JUN/13	THIS DRAWING CONTAINS INFORMATION THAT IS PROPRIETARY TO TXGA INDUSTRIAL ELECTRONICS(S.Z)CO.,LTD AND SHOULD NOT BE USED WITHOUT WRITTEN PERMISSION		

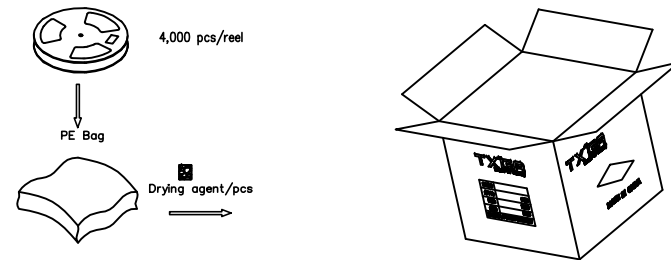
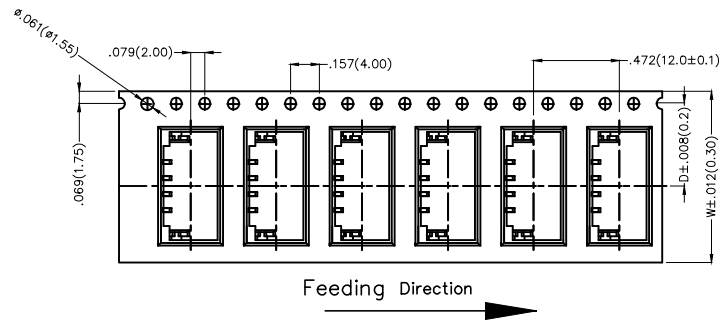
REV	LOCATIONS	DESCRIPTION	DATE	REVISER	APPD

Note:

- 10 sprocket hole cumulative tolerance ± 0.2
- Carrier camber is within 1.0mm in 250mm
- Material: White Conductive polystyrene Alloy 100% recyclable
- All dimensions meet EIA-481-3 requirements
- Peel off force of cover tape & carrier tape: 20g~130g (0.2N~1.3N)
- Component load per 13" reel: 4,000 pcs



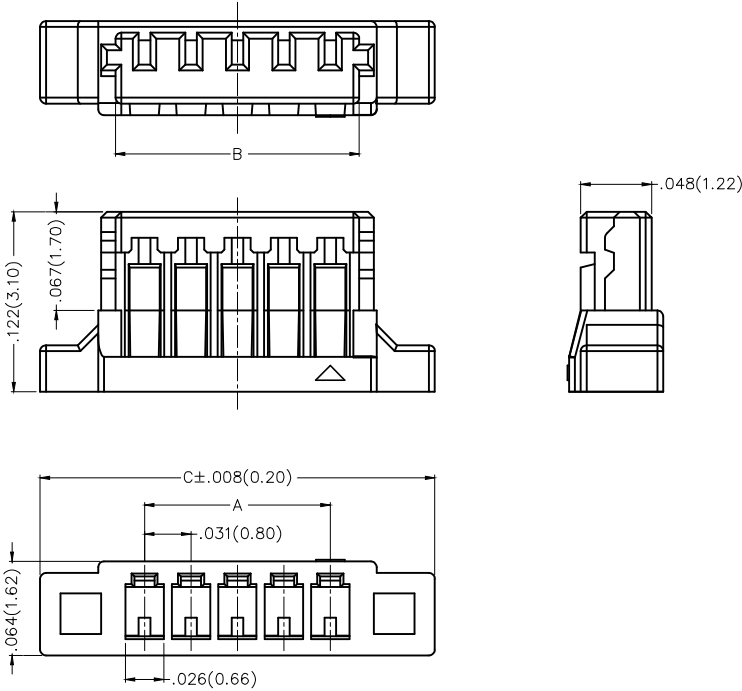
Circuits (n)	Dimensions (in/mm)		Circuits (n)	Dimensions (in/mm)	
	D	W		D	W
2	.295(7.50)	.630(16.00)	10	.453(11.50)	.945(24.00)
3	.295(7.50)	.630(16.00)	11	.453(11.50)	.945(24.00)
4	.295(7.50)	.630(16.00)	12	.453(11.50)	.945(24.00)
5	.295(7.50)	.630(16.00)	14	.453(11.50)	.945(24.00)
6	.295(7.50)	.630(16.00)	16	.453(11.50)	.945(24.00)
7	.295(7.50)	.630(16.00)	20	.453(11.50)	.945(24.00)
8	.295(7.50)	.630(16.00)			
9	.295(7.50)	.630(16.00)			



 THIRD ANGLE PROJECTION	GENERAL TOLERANCES (UNLESS SPECIFIED)		APPROVE BY	DATE	PART NO.	ITEM NO.	 Leader Of Industry
	X.X ± 0.012 (0.30)	X.X ± 5'	FRANK	28/JUN/13	FWF08002-SXXBX4W5M	FWF08002	
DESIGN UNITS Inch (metric)	X.XX ± 0.008 (0.20)	.X' ± 2'	CHECKED BY	DATE	TITLE		REV 0
SCALE	X.XX ± 0.006 (0.15)	.XX' ± 1'	JACOB	28/JUN/13	Wire to Board (Wafer) Pitch 0.8mm 90° Angle (SMT)		
5:1	X.XXX ± 0.004 (0.10)	.XXX' ± 0.5'	DRAWN BY	DATE	THIS DRAWING CONTAINS INFORMATION THAT IS PROPRIETARY TO TXGA INDUSTRIAL ELECTRONICS(S.Z)CO.,LTD AND SHOULD NOT BE USED WITHOUT WRITTEN PERMISSION		
A4			CHERRY	28/JUN/13			

REV	LOCATIONS	DESCRIPTION	DATE	REVISER	APPD

Electrical
 Temperature Range—Operating: -25°C~+85°C
 Material and Plating
 Housing: PA66 (UL 94V-0)
 Applicable Terminal: FT08001
 Mates With: FWF08001, FWF08002 Series



Ordering Information

FHG 080 02 — S XX M 2 W5 B
 1 2 3 4 5 6 7 8 9

1	Category	2	Series Number	3	Distinction No.	4	Row Option		
	FHG—Housing		080—Pitch 0.80mm		02		S—Single Row		
5	Circuits	6	Type	7	Material—Resin	8	Color—Resin	9	Packaging
	XX		M—Male		2—PA66		W5—Natural		B—PE Bag

Circuits (n)	Part No.	Dimensions(in./mm)			Circuits (n)	Part No.	Dimensions(in./mm)		
		A	B	C			A	B	C
2	FHG08002-S02M2W5B	.031(0.80)	.071(1.80)	.173(4.40)	10	FHG08002-S10M2W5B	.283(7.20)	.323(8.20)	.425(10.80)
3	FHG08002-S03M2W5B	.063(1.60)	.102(2.60)	.205(5.20)	11	FHG08002-S11M2W5B	.315(8.00)	.354(9.00)	.457(11.60)
4	FHG08002-S04M2W5B	.094(2.40)	.134(3.40)	.236(6.00)	12	FHG08002-S12M2W5B	.346(8.80)	.386(9.80)	.488(12.40)
5	FHG08002-S05M2W5B	.126(3.20)	.165(4.20)	.268(6.80)	13	FHG08002-S13M2W5B	.378(9.60)	.417(10.60)	.520(13.20)
6	FHG08002-S06M2W5B	.157(4.00)	.197(5.00)	.299(7.60)	14	FHG08002-S14M2W5B	.409(10.40)	.449(11.40)	.551(14.00)
7	FHG08002-S07M2W5B	.189(4.80)	.228(5.80)	.331(8.40)	15	FHG08002-S15M2W5B	.441(11.20)	.480(12.20)	.583(14.80)
8	FHG08002-S08M2W5B	.220(5.60)	.260(6.60)	.362(9.20)	16	FHG08002-S16M2W5B	.472(12.00)	.512(13.00)	.614(15.60)
9	FHG08002-S09M2W5B	.252(6.40)	.291(7.40)	.394(10.00)	20	FHG08002-S20M2W5B	.598(15.20)	.638(16.20)	.740(18.80)

 THIRD ANGLE PROJECTION	GENERAL TOLERANCES (UNLESS SPECIFIED)		APPROVE BY	DATE	PART NO.	ITEM NO.	 Leader Of Industry	
	X.±.012(0.30)	X.±5'	FRANK	04/JUN/15				FHG08002-SXXM2W5B
DESIGN UNITS Inch (metric)	X.X±.008(0.20)	.X'±2'	CHECKED BY	DATE	TITLE		REV 0	SHEET NO. 1/1
SCALE	X.XX±.006(0.15)	.XX'±1"	CHERRY	04/JUN/15	Wire to Board Pitch 0.8mm(Housing)			
5:1	X.XXX±.004(0.10)	.XXX'±0.5'	DRAWN BY	DATE	THIS DRAWING CONTAINS INFORMATION THAT IS PROPRIETARY TO TXGA INDUSTRIAL ELECTRONICS(S.Z)CO.,LTD AND SHOULD NOT BE USED WITHOUT WRITTEN PERMISSION			
A4			KATE	04/JUN/15				

1 2 3 4 5 6 7 8

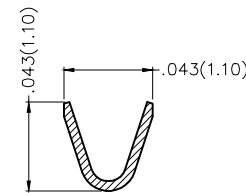
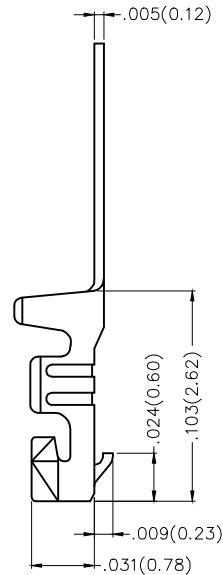
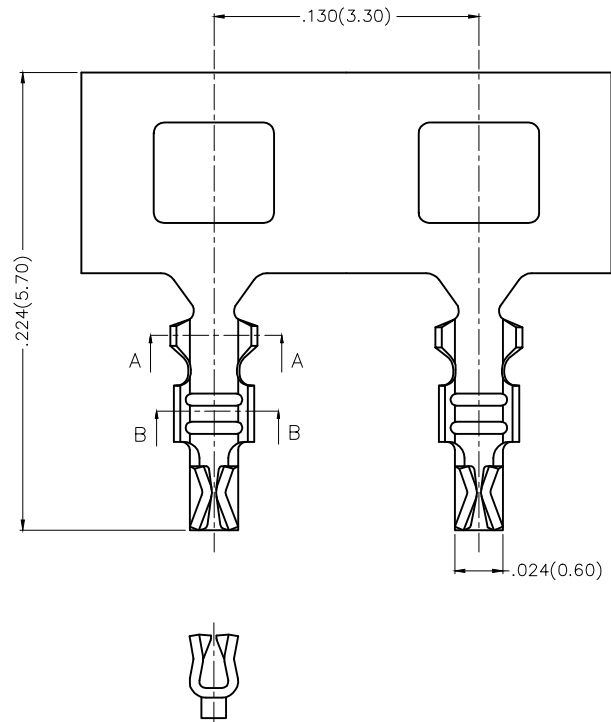
REV	LOCATIONS	DESCRIPTION	DATE	REVISER	APPD
1	△	MOQ: Change 25,000 into 30,000 pcs/reel	14/SEP/18	KATE	FRANK

SPECIFICATIONS

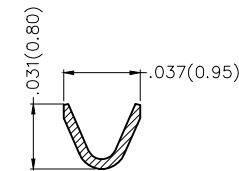
Electrical

Current Rating: 1.5A AC(rms)/DC
 Voltage Rating: 50V AC(rms)/DC
 Contact Resistance: 20 mΩ Max
 Insulation Resistance: 100 MΩ Min
 Withstanding Voltage: 500V AC r.m.s
 Temperature Range-Operating: -25°C~+85°C

Material: Phosphor Bronze
 Plating: Tin Or Gold Plated Over Nickel
 Wire Range: 32AWG
 Applicable Housing: FHG08002 Series
 Minimum Order Quantity 30,000 PCS



Section A-A



Section B-B

Ordering Information

FT 080 01 — F X H
 1 2 3 4 5 6

1	Category	2	Series Number	3	Distinction No.	4	Type	5	Plating	6	Packaging
	FT-Terminal		080-Pitch0.80mm		01		F-Female		1-Gold Plated 2-Tin Plated		H-Paper Axis

<p>THIRD ANGLE PROJECTION</p>	GENERAL TOLERANCES (UNLESS SPECIFIED)		APPROVE BY	DATE	PART NO.	ITEM NO.	<p>Leader Of Industry</p>
	X.±.012(0.30)	X.±5'	FRANK	04/JUN/15	FT08001-FXH	FT08001	
DESIGN UNITS Inch (metric)	X.X±.008(0.20)	X.±2'	CHECKED BY	DATE	TITLE		REV 1
SCALE	X.XX±.006(0.15)	.XX'±1'	CHERRY	04/JUN/15	Wire to Board Pitch 0.8mm(Terminal)		SHEET NO. 1/2
5:1	X.XXX±.004(0.10)	.XXX'±0.5'	DRAWN BY	DATE	THIS DRAWING CONTAINS INFORMATION THAT IS PROPRIETARY TO TXGA INDUSTRIAL ELECTRONICS(S.Z)CO.,LTD AND SHOULD NOT BE USED WITHOUT WRITTEN PERMISSION		
A4			KATE	04/JUN/15			

1 2 3 4 5 6 7 8

1 2 3 4 5 6 7 8

REV	LOCATIONS	DESCRIPTION	DATE	REVISER	APPD

A

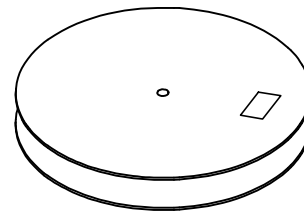
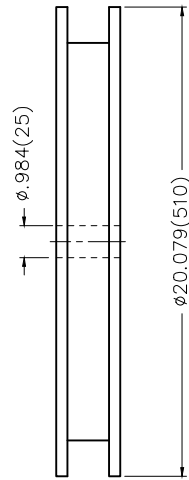
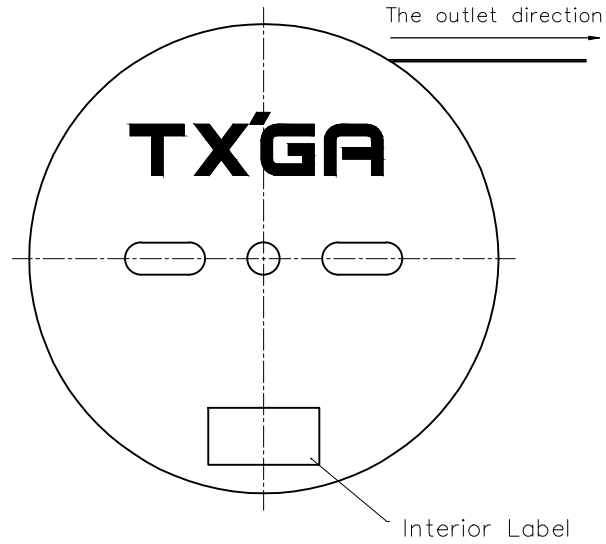
B

C

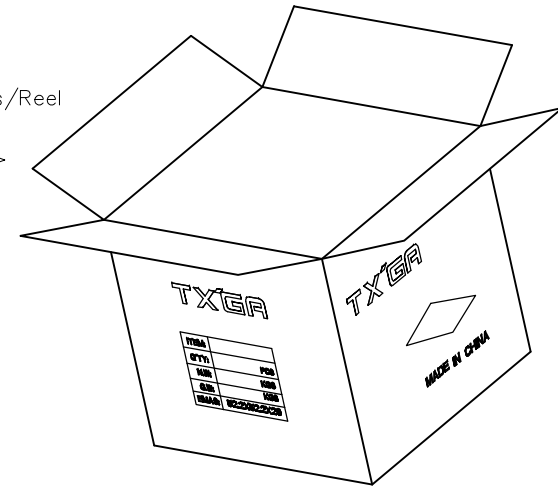
D

E

F



30,000 Pcs/Reel



<p>THIRD ANGLE PROJECTION</p>	GENERAL TOLERANCES (UNLESS SPECIFIED)		APPROVE BY FRANK	DATE 04/JUN/15	PART NO. FT08001-FXH	ITEM NO. FT08001	<p>Leader Of Industry</p>
	DESIGN UNITS Inch (metric)	X.±.012(0.30)	X.±5'	CHECKED BY CHERRY	DATE 04/JUN/15	TITLE Wire to Board Pitch 0.8mm(Terminal)	
SCALE 5:1	SIZE A4	X.XX±.006(0.15)	.XX'±1'	DRAWN BY KATE	DATE 04/JUN/15	THIS DRAWING CONTAINS INFORMATION THAT IS PROPRIETARY TO TXGA INDUSTRIAL ELECTRONICS(S.Z)CO.,LTD AND SHOULD NOT BE USED WITHOUT WRITTEN PERMISSION	
		X.XXX±.004(0.10)	.XXX'±0.5'			REV 1	SHEET NO. 2/2

1 2 3 4 5 6 7 8